

The Heart Valve Center brings together a team of experienced experts from multiple disciplines to offer the most complete and fully integrated care in the region for patients with valvular heart disease:

- **New patient evaluations** by cardiologists, cardiac surgeon and other specialists as needed, complete in one stop
- **Non-invasive evaluation** including cutting edge quantitative and 3-dimensional echocardiography techniques
- **Minimally invasive surgical options** to reduce patient morbidity
- **Full perioperative support services** from on-site pulmonary/intensive care specialists
- **Most experienced cardiac anesthesiology** and perfusionist teams in the area
- **Immediate availability** of all subspecialty and ancillary services for complex patients
- **Complete postoperative care** and follow-up, including rehabilitation and long-term outcomes tracking

BryanLGH  Heart Institute

1600 S. 48th St., Suite 600
Lincoln, NE 68506
402.483.3371, option 4

Toll free 866.895.5609
www.BHI-1.com

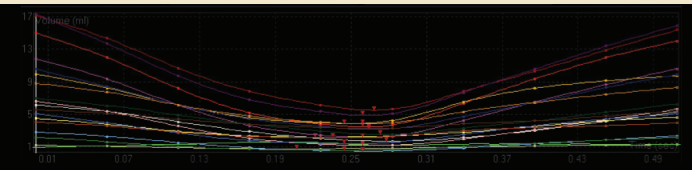


Heart Valve Center of Excellence



The First Name in Health Care

 BryanLGH East
MEDICAL CENTER



The Heart Valve Center of Excellence

The Heart Valve Clinic

The Heart Valve Clinic is vital to the Center of Excellence concept, reflecting our belief that patients with valve disease require specialized management in all phases of their care. In the presurgical stages, patients with chronic valve problems require systematic follow-up to minimize the risk of valve-related complications and optimize surgical timing. After surgical correction, patients require periodic monitoring to ensure optimal outcomes. The Heart Valve Clinic achieves this by coordinating follow-up care together with the patient's primary care physician and referring cardiologist.

Surgical Excellence

The BryanLGH Heart Institute is the only surgical program in Nebraska to earn top ratings for valve replacement surgery outcomes. The Heart Valve Center offers a full spectrum of surgical services including complex mitral valve repair; minimally invasive surgical approaches; complex surgeries including combined valve, coronary and atrial fibrillation corrective operations; valve-sparing aortic root repair; and valve surgery for advanced heart failure patients.

Excellence in Non-Invasive Assessment

With the persistent trend toward earlier surgical correction of valve disease, patient assessment relies increasingly on non-invasive methods for accurate quantitation of valve lesion severity. The Heart Valve Center uses the most up-to-date non-invasive tools to evaluate valve disease, including 3-D and quantitative echo techniques, in addition to time-honored invasive catheter based methods.

The Team Approach

The care of the patient with valve disease requires more than excellent cardiologists and cardiac surgeons, particularly in the perioperative setting. The Heart Valve Center offers the best supported most fully integrated multidisciplinary team in the area for in-hospital care of valve surgery patients. In the operating room, the patient is cared for by an experienced team of cardiac anesthesia and perfusion specialists. Our cardiac ICU is staffed on-site by intensive care specialist physicians for management of patients with complex medical comorbidities or special ventilatory requirements. Since the BryanLGH Heart Institute operates within BryanLGH Medical Center, the Heart Valve Center is backed by a full service referral hospital with a full offering of subspecialist and ancillary services.

Heart Valve Center of Excellence Team



Edward Raines, MD
Surgical Director



Keith Miller, MD, FACC
Cardiology Director



Terry Bejot, MD
Anesthesia Director

Clinician
Rhonda Olmsted, APRN
Heart Valve Clinic Coordinator

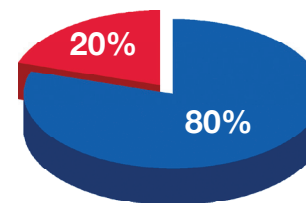


BryanLGH Heart Institute is the most experienced minimally invasive cardiac surgery program in the region

RANKED **#1** IN NEBRASKA FOR CARDIAC SURGERY
- HealthGrades 2010

Distribution of Mitral Valve Procedures

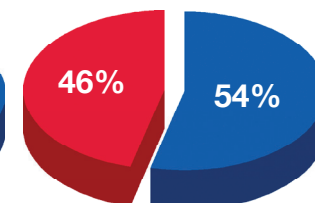
CY 2009



- Mitral Repair
- Mitral Replacement

Mitral Valve Procedures

CY 2009



- Minimally Invasive
- Open

Valve Replacement Mortality Rates

BryanLGH vs. Society of Thoracic Surgeons

Procedure	BryanLGH Heart Institute (2008-2009)	Society of Thoracic Surgeons (2008-2009)
MITRAL VALVE REPAIR	0.0%	1.2%
MITRAL VALVE REPAIR/CABG	0.0%	5.3%

BryanLGH Heart Institute vs. Society of Thoracic Surgeons

Aortic Valve Replacement (Risk adjusted)

BryanLGH vs. Society of Thoracic Surgeons

Procedure	BryanLGH Heart Institute (2009)	Society of Thoracic Surgeons (2009)
AORTIC VALVE REPLACEMENT	0.0%	3.0%

BryanLGH Heart Institute vs. Society of Thoracic Surgeons

Referrals accepted

Call Rhonda Olmsted, APRN – Heart Valve Clinic Coordinator 402.483.3371, option 4