

COST PER PERSON \$95

Space on tours is limited and reservations are accepted on a first-come, first-served basis.

Full payment is required with your reservation.

Deadline for confirmed reservations is August 20, 2012.

Send reservation and payment to:

**BryanLGH Medical Center
55PLUS
1600 S 48th St
Lincoln NE 68506-1299**

Please make checks payable to FUN TOURS.

Reservation Form

**Ashfall Fossil Beds
State Historical Park & More!**

September 20, 2012

Number of people _____

Last Name _____

First Name(s) _____

Address _____

City _____ State _____ Zip _____

Phone # () _____

Departure Point: BryanLGH East

TOUR FEATURES:

Documentation including departure information, tour itinerary, travel tips, and other travel information will be provided approximately two weeks prior to departure.

Guaranteed prices: The published prices are guaranteed barring any unforeseen escalation of fuel prices. If fuel charges were to escalate due to uncontrollable conditions, a fuel surcharge will be applied to your tour rate.

Cancellation policy: Full refunds up to 8/20/2012.

Any cancellations made up to 72 hours prior to departure will be subject to a \$45 per person cancellation fee. No-shows or cancellations within 72 hours of departure are non-refundable.

Minimum number to operate this tour is 30.

Tours Provided by Fun Tours, Inc.

RESPONSIBILITY: FUN TOURS and 55PLUS have no responsibility in whole or in part for any delays, delayed departure or arrival, missed carrier connections, loss, damage, or injury to person or property or mechanical defect, failure, or negligence of any nature whatsoever caused in connection with any accommodations, transportation, or other services or any substitution of hotels or of common carrier equipment beyond their control, with or without notice, or for any additional expenses occasioned thereby. Rates are subject to change therein at or before the time of departure. No revisions of the printed itinerary parts included features are anticipated; however, the right is reserved to make any changes, with or without notice, that might become necessary with the mutual understanding that any additional expenses will be paid by the individual passenger. Baggage is at the owner's risk throughout the tour, unless insured. The right is reserved to decline to accept or retain any person as a member of these tours at any time. Other transportation companies concerned are not to be held liable for any act, omission, or event during the time the passengers are on board their conveyances. The passage contract in use, when issued, shall constitute the sole contract between the company (companies) and the passenger and/or purchaser of this trip. Application for reservation on this tour indicates full acceptance of the foregoing conditions.

**BryanLGH
Medical Center
55PLUS
*Presents***



**Ashfall Fossil Beds
State Historical
Park & More!**

September 20, 2012

Travel with your friends at **55PLUS** to discover Nebraska's prehistoric roots along with a taste of comedy on this fun, one-day adventure. Head north today with your first stop being the **Elkhorn Valley Museum** in Norfolk, home of the interactive **Johnny Carson exhibit** and "The Tonight Show" set.

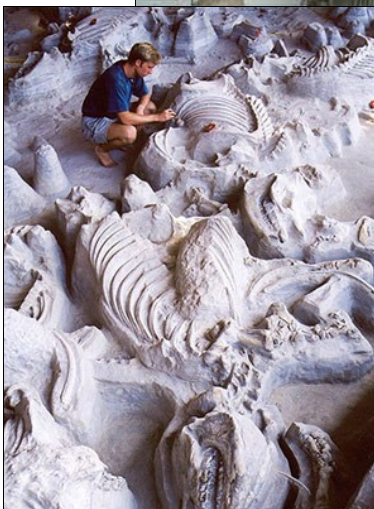


Other exhibits include a horse-drawn buggy and square-turn tractor on display.

After lunch at a local restaurant, it's off to the **Ashfall Fossil Beds State Historical Park**. The fossils were discovered in 1971 when heavy rains uncovered the fossil of an elephant jaw in Melvin Colson's cornfield. A dig revealed a whole herd of rhinos that perished very suddenly on the Nebraska plains.

Nebraska used to be sub-tropical grasslands where camels, rhinos and other animals roamed. When a volcanic eruption spewed ash hundreds of feet thick over the area, these animals were perfectly preserved in their natural state.

Then it's time to head home after a fun day in Northeast Nebraska. Sign up early to avoid disappointment!



Your tour includes:

- Roundtrip transportation via deluxe motorcoach
- Admission charges
- All sightseeing
- All taxes and tips on included sightseeing and meals
- One lunch
- Gratuities for driver and tour director
- Services of a professional tour director

FULL PAYMENT IS REQUIRED WITH YOUR RESERVATION

Deadline for confirmed reservations:
August 20, 2012

Approximate departure time: 7:00 a.m.

Approximate return time: 7:30 p.m.

(Finalized times will be in your tour documents.)

